



MASTERWALL.



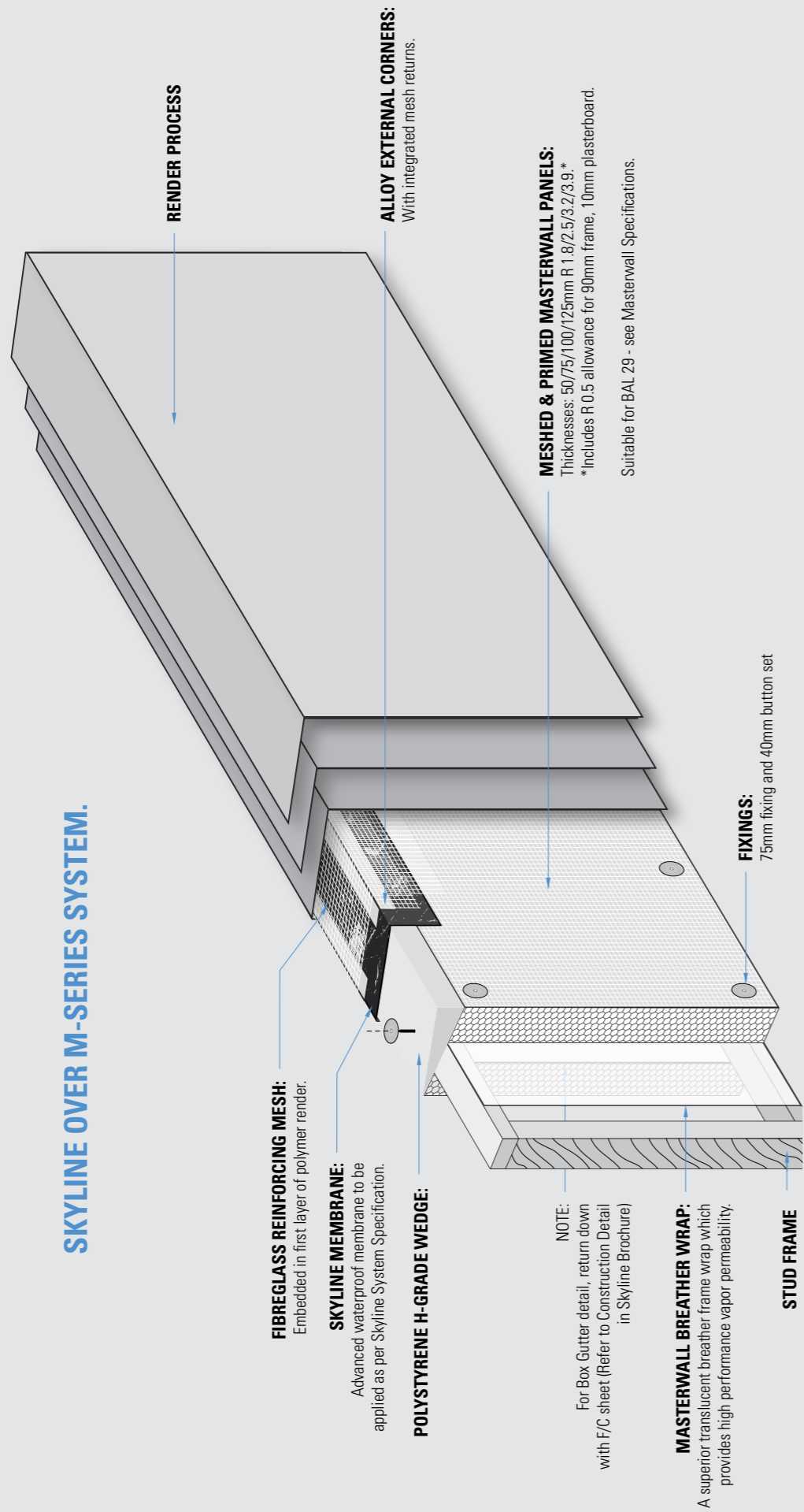
SKYLINE

**Architectural 'cap-less' solutions for
parapet walls & balcony heads.**

TECHNICAL DOCUMENT:

SYSTEM INSTALLATION & CONSTRUCTION DETAILS

MASTERWALL AUSTRALIA PTY LTD. 18-20 Cyber Loop, Dandenong South, Victoria, Australia
EMAIL. sales@masterwall.com.au WEB. masterwall.com.au NATIONAL ENQUIRIES. (03) 9799 6565



SYSTEM SPECIFICATION

SKYLINE EXPLODED VIEW DIAGRAM

Frame Construction	2
--------------------	---

INTRODUCTION

Description	4
Polystyrene Wedge	4
Fibre Cement (F/C)	4
Brick / Masonry	4
Detail Tape	4
Layout	4
Cutting	4
Health and Safety	4
Method	4
Joint Tape	5
Adhesive Parging	5
Penetrations	5
Warranty - 7 years	5
Render	5

CONSTRUCTION DETAILS

Rendered parapet wall	6
M-SERIES panel. Suitable for up to BAL 29.	
Rendered parapet wall (Close up detail)	7
M-SERIES panel. Suitable for up to BAL 29.	
Brick veneer	8
Double brick parapet without slope	9
Double brick parapet with slope	9
Masonry wall control joint	10
Elevation view (front)	
Masonry wall control joint	11
Plan view (top)	
Masonry wall control joint	11
Elevation view (rear)	
Concealed flashing detail	12
Waterproof ledge or similar	
Tape placement detail	13
Checklist and notes	14

INTRODUCTION

Description

The Skyline membrane may be installed over substrates that have a smooth surface for a strong bond, such as polystyrene, fibre cement, plywood, M-SERIES panel, smooth render, concrete or smooth masonry. The Skyline membrane will adhere to rough surfaces when parged with Skyline compatible adhesive (consult Masterwall Australia). Adhesion test may be required.

Polystyrene Wedge

H Grade polystyrene wedges are recommended to parapet designs and should have a fall of 7° minimum back into the box gutter to avoid water run off the front edge of the building. Wedges should be screwed to parapet frame at 300mm centres using Masterwall fixings with 40mm red washers. Mitre all external/internal corners and tightly butt all joints together, no adhesive is required to wedge joints. Apply Masterwall Joint Foam between wedge/ M-SERIES panel junction to seal joint on vertical face.

Fibre Cement (F/C)

When using F/C sheet as a surface for Skyline to bond to, a minimum of 4.5mm thick material should be used, such as with the drop down component into a box gutter on a parapet. Use only 6mm F/C sheet or greater on all horizontal surfaces such as balcony balustrades or cavity brick parapet when used as a cap. Use cement tile adhesive to bond F/C to brick or masonry substrates.

Brick / Masonry

Bonding Skyline membrane to rough brick will require parging with a Skyline compatible adhesive or alternatively the surface can be coated with a smooth render finish which Skyline membrane will bond to as with brick veneer. A test patch should be performed to ensure good adhesion will result. Note: any smooth render should be dry prior to applying Skyline. Cavity brick will require a 6mm minimum F/C cap bonded with tile adhesive, and brick veneer a polystyrene cap to the rear (See details on page 8).

Detail Tape

Skyline compatible detail tape is to be applied to all '3 surface junctions' to ensure complete water-tightness is achieved at the point of junction. (See detail on page 13 Detail tape should be 50x50mm square and pressed firmly onto all adjacent surface planes at the junction point. Avoid touching raw detail tape with hands, by using plastic film backing once removed from tape. (See Skyline installation video for correct technique)

Layout

Skyline membrane is to terminate minimum of 35mm onto all vertical surfaces to form a 'cap' for water runoff. All joins in the membrane shall overlap 75mm minimum. Vertical returns onto Masterwall cladding to be rendered shall be 75mm. Vertical returns behind alternative cladding shall be 100mm.

Cutting

Use sharp clean knife only to cut Skyline membrane.

Health and Safety

Skyline membrane poses no issues when coming in contact with skin; however avoid contact with eyes. Dispose all waste off cut material according local refuse regulations.

Method

Ensure all substrates are clean of dirt & dust and free of organic matter and solvents. Peel paper from back of Skyline membrane, smoothing out over applied area while working from one direction to ensure no air pockets exist. Apply strong pressure either by hand or roller to activate the adhesive bond of the butyl to the substrate.

Joint Tape

Lap all membrane joins by 75mm minimum. Apply Skyline compatible adhesive to area to be bonded only, by laying two beads of adhesive, and smearing over entire bonded area with a scraper to a thin film of around 1mm. (See Skyline installation video for correct technique) None of the polyester fibre should be visible once adhesive is spread. Press top layer of Skyline onto the adhesive and apply hand pressure to firmly bond. (Note: avoid spreading adhesive on exposed face of Skyline that is to be rendered)

Adhesive Parging

To parge Skyline to substrate, apply 8mm beads of adhesive to substrate 40mm apart, and smear over entire bonded area with a scraper to a thin film of around 1mm. None of the substrate should be visible. Press Skyline onto the adhesive and apply hand pressure to firmly bond. (Note: avoid spreading adhesive on exposed face of Skyline that is to be rendered)

Penetrations

Ensure that no nails/screws or other fixings penetrate through the final Skyline membrane as it is a total waterproofing solution. This would void all warranties.

Warranty - 7 Years

Masterwall Australia Pty Ltd warrants that its products are free from defects in materials and workmanship for a period of 7 years from the date of purchase. For a full description of the Warranty refer to the Masterwall Australia website (<http://www.masterwall.com.au>).

Render

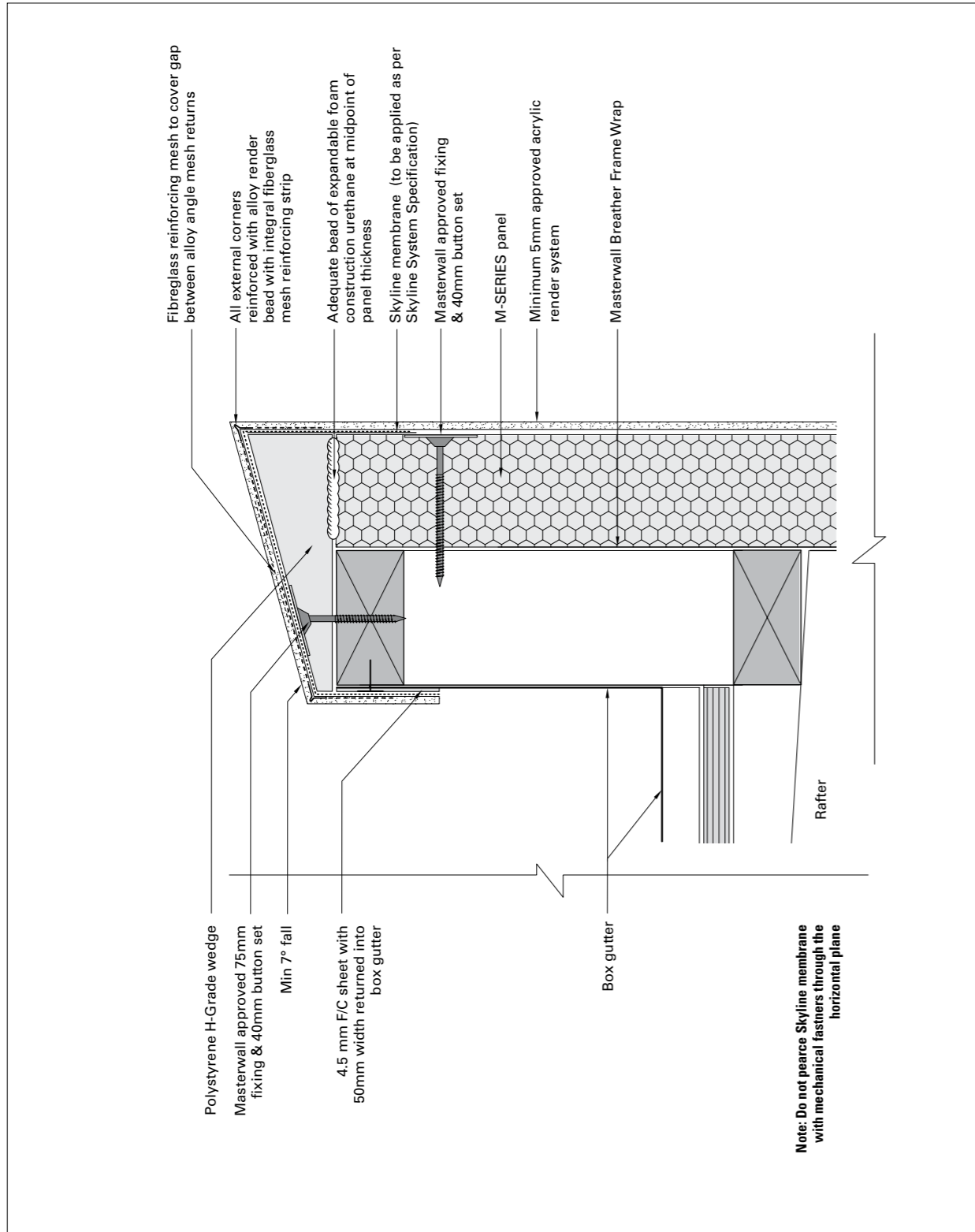
A minimum thickness of 5mm polymer modified render should be applied in two coats over entire Skyline system. A single layer of alkali resistant mesh (145-160 g/m²) must be embedded into the first coat of render.

Render trims should be pre-meshed alloy and should be either glued or embedded into first coat of render. **Do not fix with nails or any fixing methods that entail the piercing of the Skyline membrane.**

A texture finish to the coating manufacturer's specification may be applied. It is highly recommended that in a parapet design the render system be over coated with an acrylic membrane for added protection and long term durability of the system.

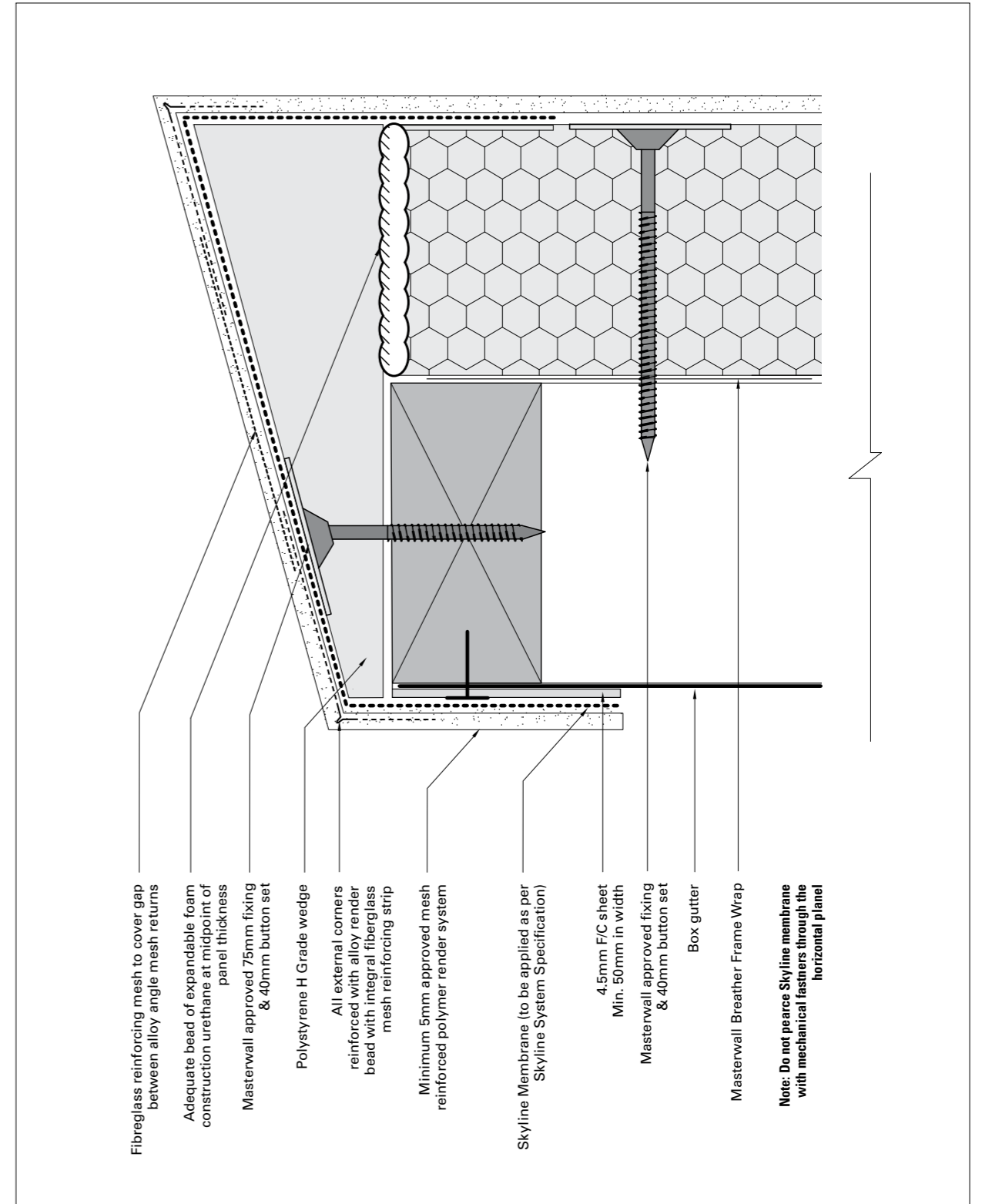


Skyline Installation Video



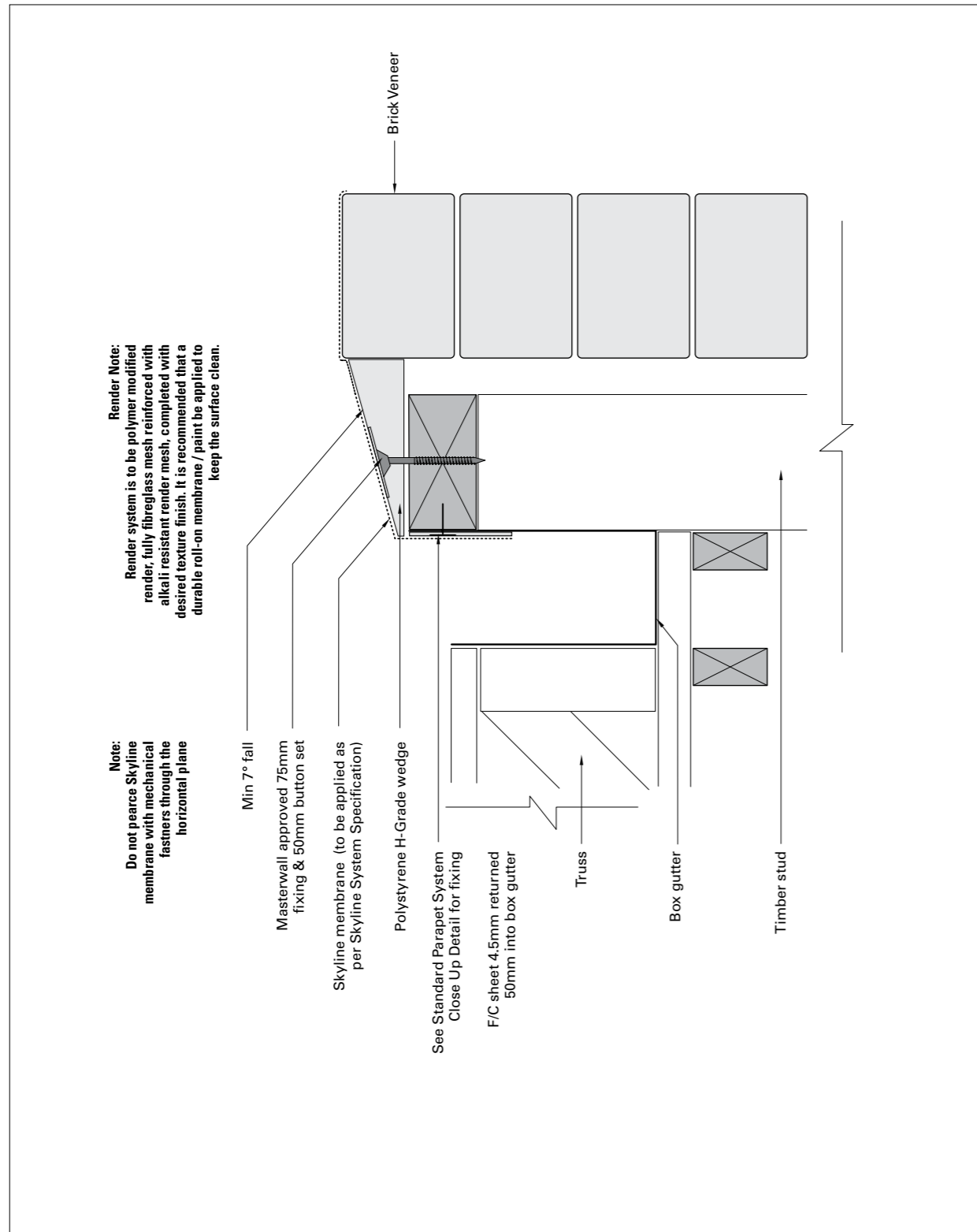
SKYLINE SYSTEM / M-SERIES PANEL:
RENDERED PARAPET WALL
 SUITABLE FOR BAL 12.5, 19 & 29.

These details are indicative for the purpose of illustrating the typical installation of Skyline system. The system is to be installed strictly in accordance with the specifications detailed in the forward section of this manual. Substrate construction to be in accordance with the Building Regulations & Statutory Requirements.



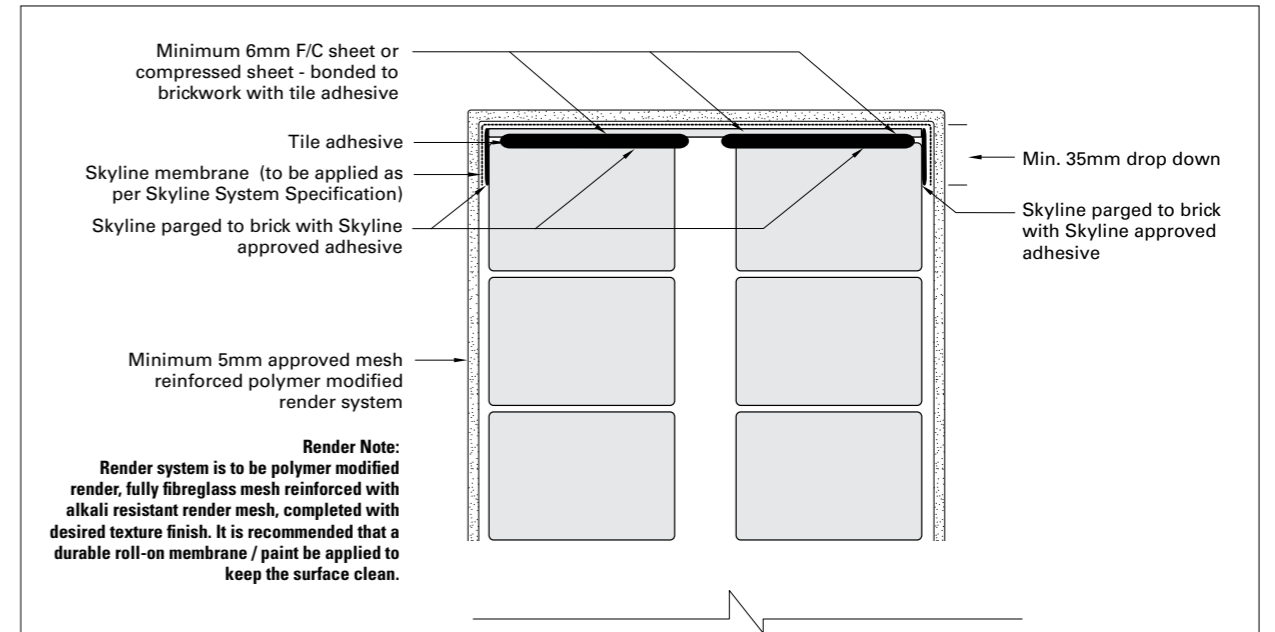
SKYLINE SYSTEM / M-SERIES PANEL:
RENDERED PARAPET WALL (CLOSE UP DETAIL)
 SUITABLE FOR BAL 12.5, 19 & 29.

These details are indicative for the purpose of illustrating the typical installation of Skyline system. The system is to be installed strictly in accordance with the specifications detailed in the forward section of this manual. Substrate construction to be in accordance with the Building Regulations & Statutory Requirements.

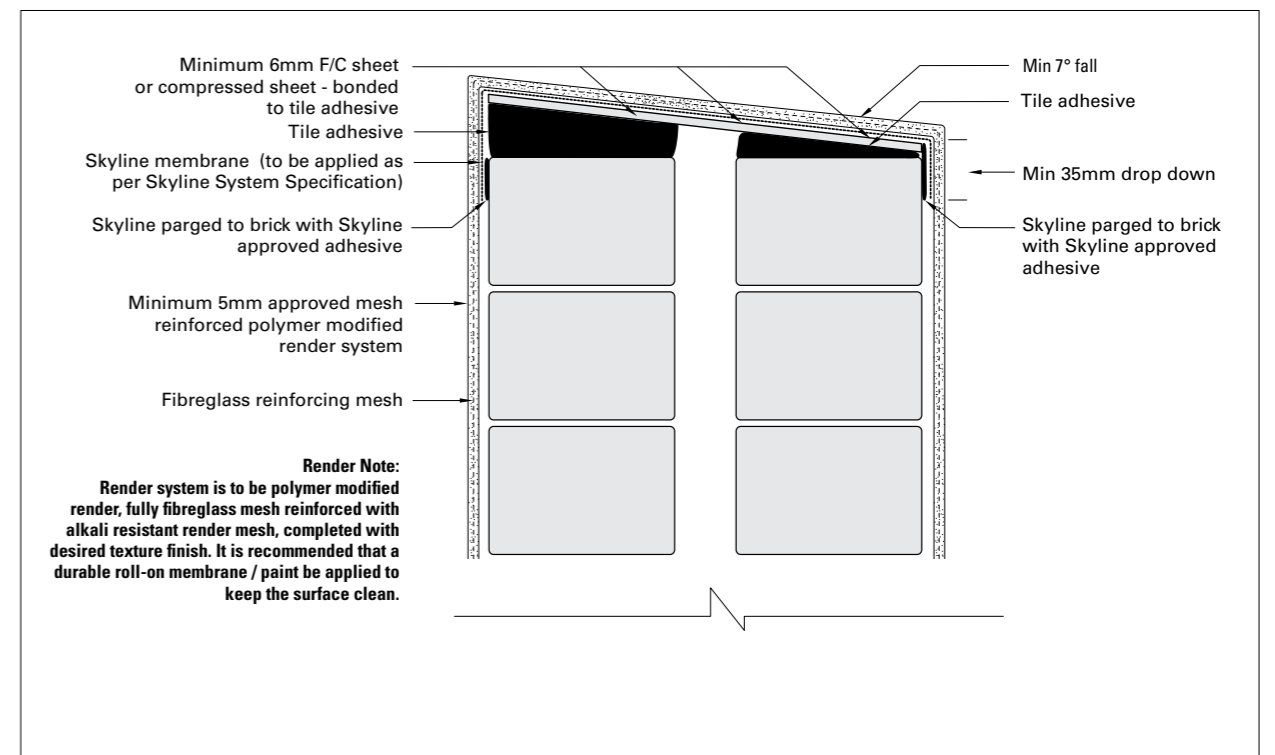


**SKYLINE / BRICK VENEER:
BRICK VENEER WITH SKYLINE
SYSTEM WATER PROOFING**

These details are indicative for the purpose of illustrating the typical installation of Skyline system. The system is to be installed strictly in accordance with the specifications detailed in the forward section of this manual. Substrate construction to be in accordance with the Building Regulations & Statutory Requirements.

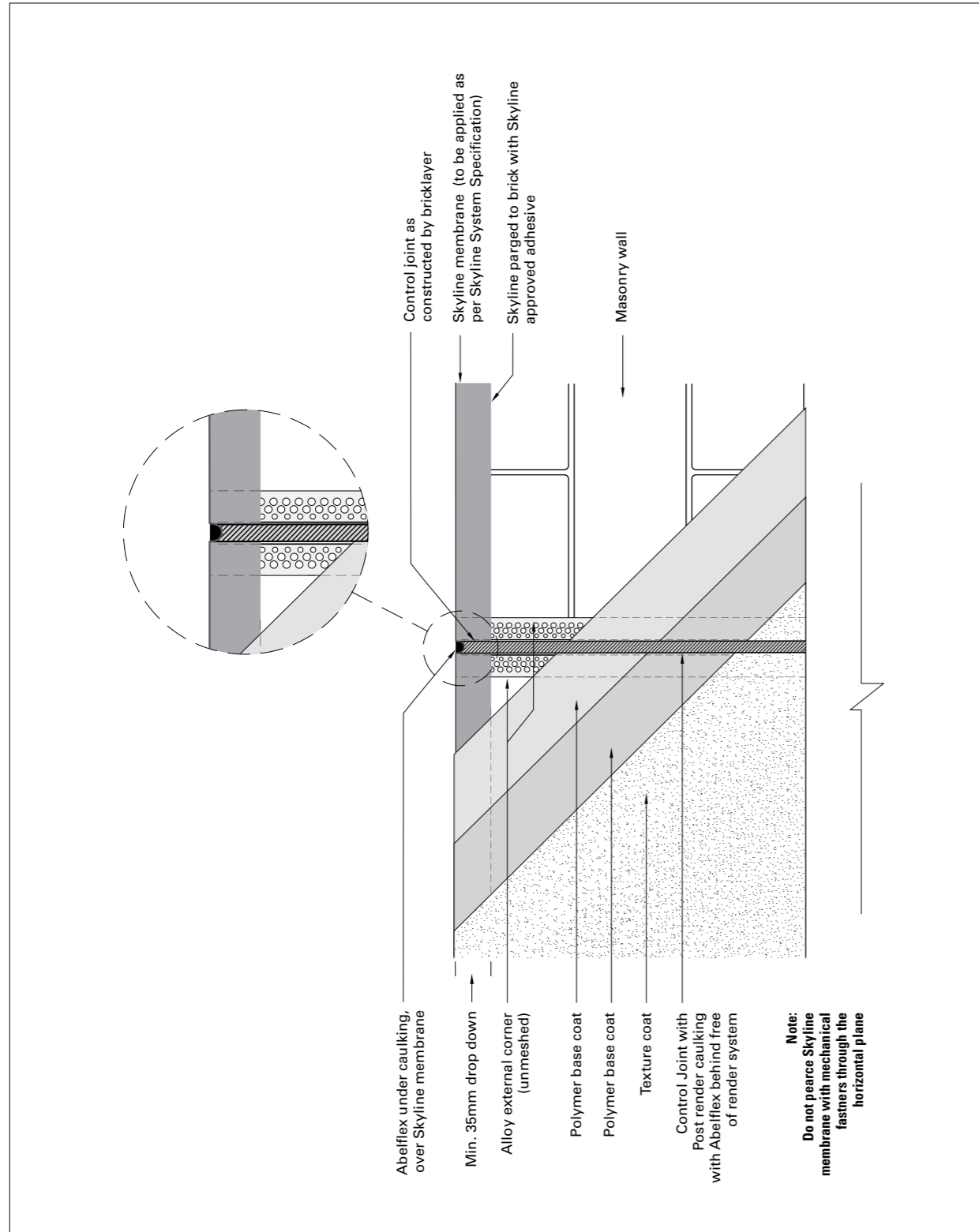


**SKYLINE / DOUBLE BRICK:
DOUBLE BRICK PARAPET WITHOUT SLOPE**



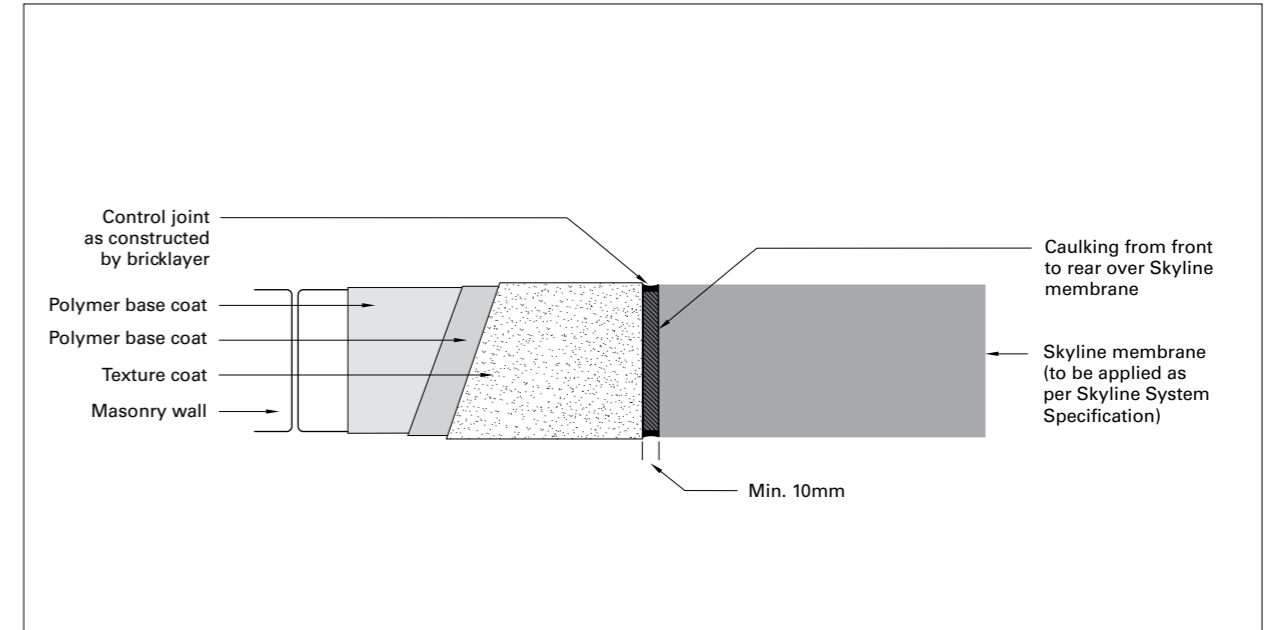
**SKYLINE / DOUBLE BRICK:
DOUBLE BRICK PARAPET WITH SLOPE**

These details are indicative for the purpose of illustrating the typical installation of Skyline system. The system is to be installed strictly in accordance with the specifications detailed in the forward section of this manual. Substrate construction to be in accordance with the Building Regulations & Statutory Requirements.

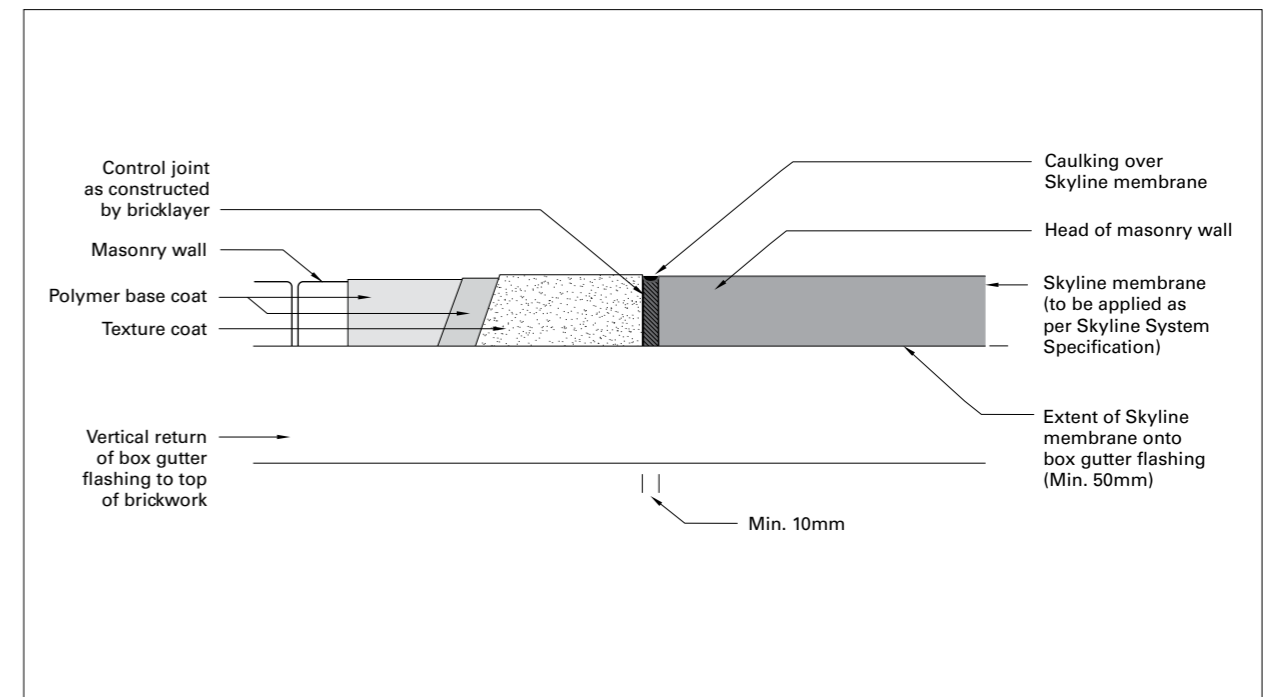


**SKYLINE:
MASONRY WALL CONTROL JOINT
ELEVATION VIEW (FRONT)**

These details are indicative for the purpose of illustrating the typical installation of Skyline system. The system is to be installed strictly in accordance with the specifications detailed in the forward section of this manual. Substrate construction to be in accordance with the Building Regulations & Statutory Requirements.

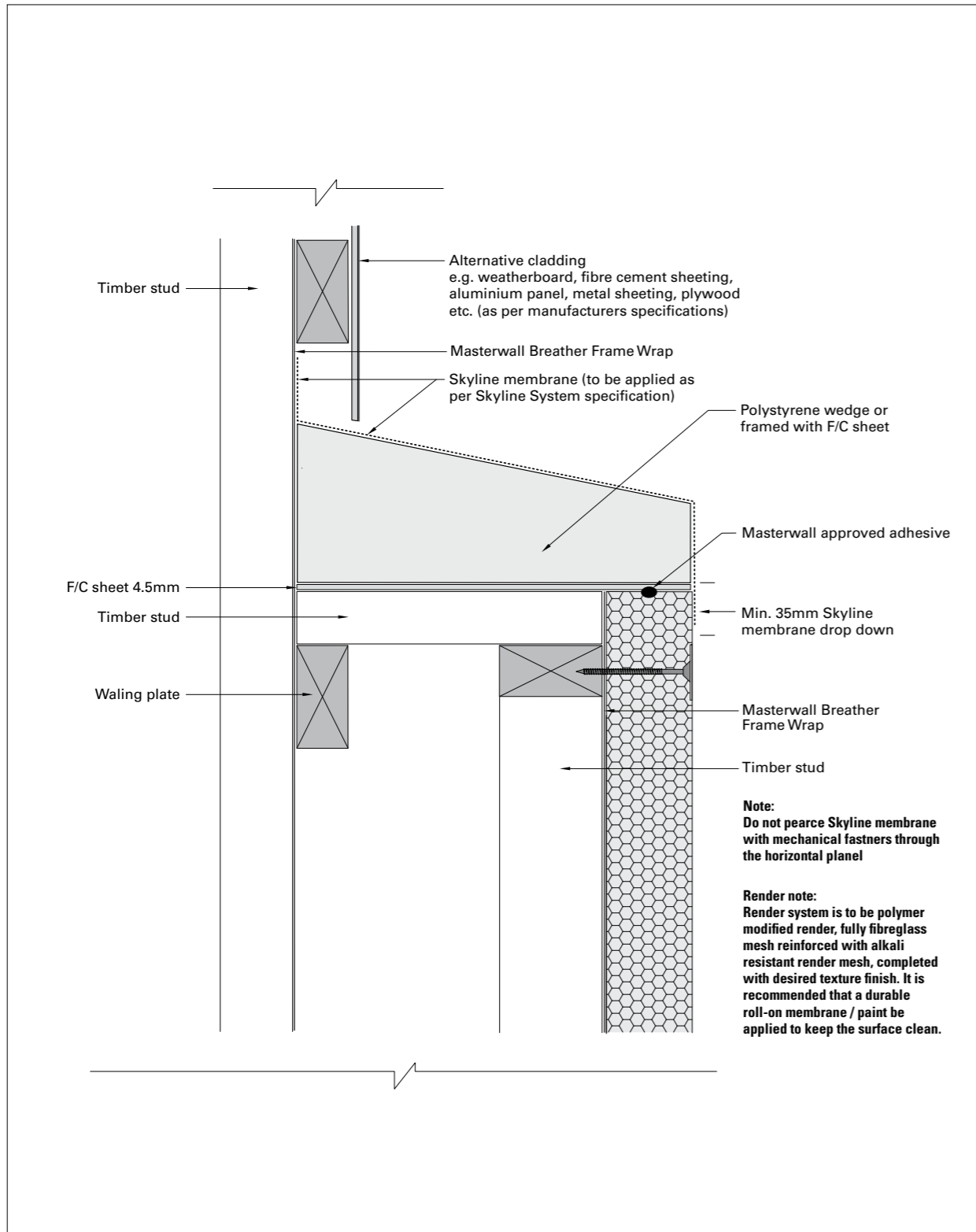


**SKYLINE:
MASONRY WALL CONTROL JOINT
PLAN VIEW (TOP)**



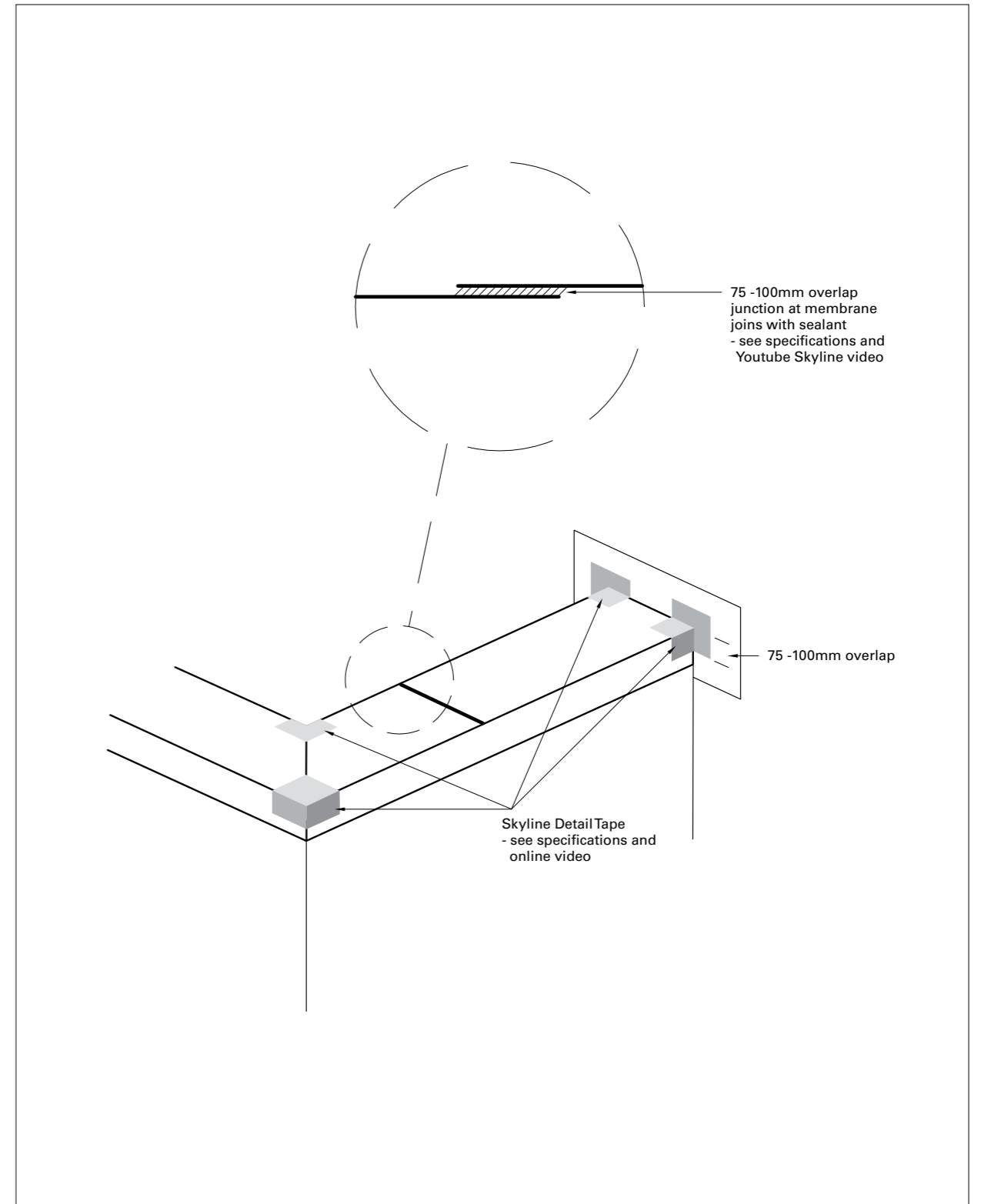
**SKYLINE:
MASONRY WALL CONTROL JOINT
ELEVATION VIEW (REAR)**

These details are indicative for the purpose of illustrating the typical installation of Skyline system. The system is to be installed strictly in accordance with the specifications detailed in the forward section of this manual. Substrate construction to be in accordance with the Building Regulations & Statutory Requirements.



SKYLINE SYSTEM: CONCEALED FLASHING DETAIL WATERPROOF LEDGE OR SIMILAR

These details are indicative for the purpose of illustrating the typical installation of Skyline system. The system is to be installed strictly in accordance with the specifications detailed in the forward section of this manual. Substrate construction to be in accordance with the Building Regulations & Statutory Requirements.



SKYLINE: DETAIL TAPE PLACEMENT & SKYLINE MEMBRANE OVERLAP DETAIL

These details are indicative for the purpose of illustrating the typical installation of Skyline system. The system is to be installed strictly in accordance with the specifications detailed in the forward section of this manual. Substrate construction to be in accordance with the Building Regulations & Statutory Requirements.

TECHNICAL ADVICE / DESIGN

Masterwall Australia supports all of its products and systems with a comprehensive Technical Advisory Service for specifiers, stockists and contractors.

This includes a software-powered service designed to give fast, accurate technical advice. Simply phone the Masterwall Australia Technical Service Department with your project specifications. Calculations can be carried out to provide a Condensation (Dew Point) Risk Analysis, and/or a Total Wall (RT) System Thermal Value so that the correct insulation thicknesses can be determined for

any given project.

CONTACT MASTERWALL AUSTRALIA

For national Technical and Sales contact Masterwall Australia:

National Phone: (03) 9799 6565

Email: sales@masterwall.com.au

Web: masterwall.com.au



MASTERWALL

Masterwall manufactures and distributes high performance exterior insulation, render and coating systems.

M-SERIES



SKYLINE



H₂O DRAINAGE WRAP

X-SERIES



UMBRA



MASTERFLOOR

M-TEX



MATRIX