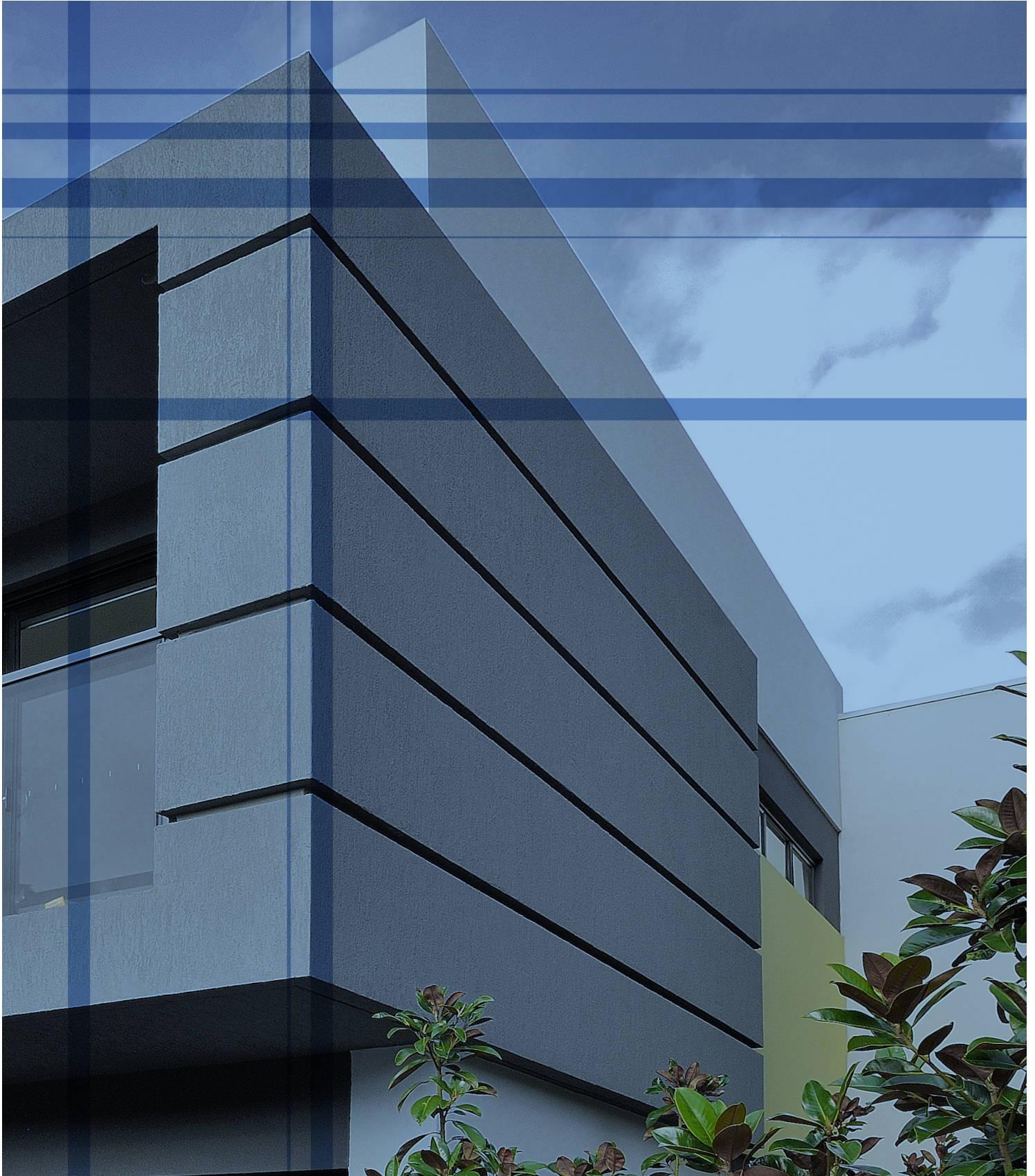


Architectural 'cap-less' solutions for parapet walls & balcony heads.



AUSTRALAND PROJECT - PARKVILLE VICTORIA



SKYLINE

Removing the requirement for traditional metal parapet capping, this new and innovative 'cap-less' system features an advanced waterproof membrane able to withstand harsh Australian conditions.

By replacing metal capping with a renderable and flexible butyl membrane over the head of the parapet wall, the Skyline System gives architects and designers the opportunity to create a continuous, monolithic finish on parapets and balcony heads with no ugly metal capping visible at the skyline of the building.

“ No more unsightly metal cappings - love it!! ”

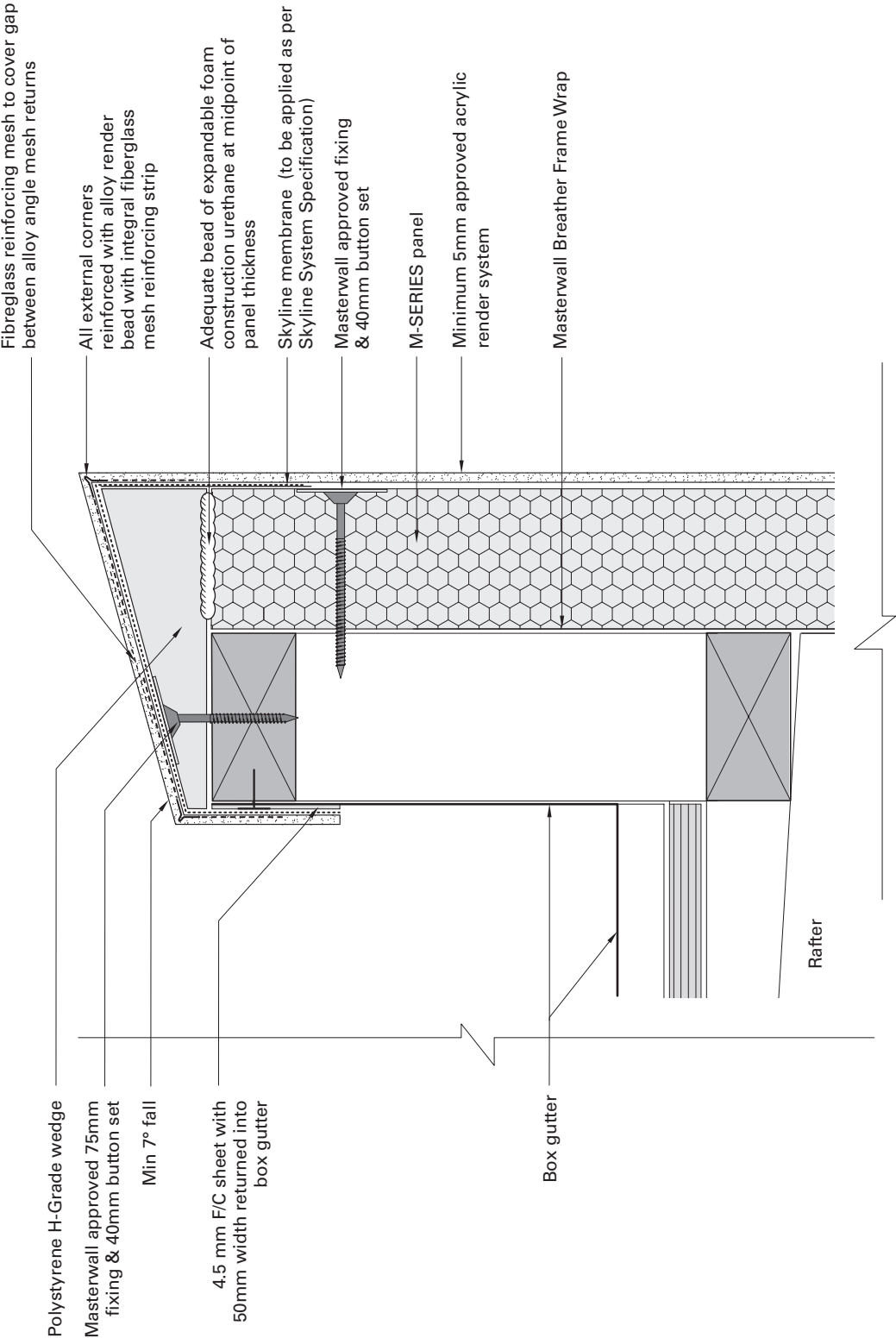
~ Carmine Santomartino
Associate Director, Point Architects, Australand Parkville

- **Create clean, uninterrupted lines on all parapets and balustrades**
- **Integrates with fully meshed render system to create a seamless finish**
- **Replaces unsightly metal capping**
- **Features an advanced flexible waterproof membrane**
- **Designed and tested for the Australian building industry**
- **Sloped head design delivers stain-free walls**
- **Eliminates cracks and crevices**
 - **no more spider webs!**

Skyline seamlessly integrates with all our External Cladding Systems and Coatings to provide a completely new and total weatherproof solution with a choice of architectural render finishes.

CONSTRUCTION DETAIL

Note: Do not pierce Skyline membrane with mechanical fasteners through the horizontal plane



SKYLINE SYSTEM / M-SERIES PANEL:
RENDERED PARAPET WALL
SUITABLE FOR BAL 12.5, 19 & 29. FOR BAL 40 SEE PAGES 10 & 11
OF THE SKYLINE CONSTRUCTION DETAILS MANUAL.

PRODUCT SPECIFICATIONS

Skyline System is an architectural concealed waterproofing detail for use on parapet designs, featuring clean, uninterrupted lines. The Skyline System is concealed by the applied render finish and eliminates the need for unsightly pressed metal cappings.

The Skyline System membrane is a pressure sensitive self-adhesive butyl tape, 0.75mm in thickness, containing a non-woven polyester fibre face, ready for the application of high polymer render. Able to withstand building movement, it has 35% elongation breaking limit and is serviceable from -10° to 100° celsius.

Skyline has undergone stringent testing to demonstrate its suitability to the relative performance requirements within both volumes, one and two of the National Construction Code (NCC) as a premium capping waterproofing system. Skyline has surpassed compliancy for external waterproofing systems referenced by the Australian Standard AS4654.1.

Important Note: As the Skyline System is a total waterproofing detail, no fixings should ever penetrate the horizontal surface of the completed parapet. All fixings of balustrades and the like should only be mounted on the vertical wall surface only.

Product:

Single sided Butyl - non-woven fabric.

Description:

A non-woven polyester material coated with a black butyl rubber adhesive supplied on a siliconised kraft paper liner.

Colour:

Black (membrane) with white facing.

Roll size:

Standard length 20 metres and available in widths up to 1200mm.

Technical details:

Tape thickness:	0.75mm
Breaking load:	51 N/cm
Adhesion to steel:	7.8 N/cm
Vapour penetration:	3.1 g/m2 Hrs
Elongation at break:	35%
Service temperature:	-10° to 100° C
Storage temperature:	15° to 25° C
Shelf life:	12 months

PHOTOGRAPHY - Australand Parkville:

- 1 Skyline parapet detail featuring sloped head design for stain-free walls.
- 2 Skyline parapet with Masterwall insulated external cladding featuring 50mm shadowline effect and finished with scratch-coat texture.
- 3 Skyline parapet and balcony heads with Masterwall insulated external cladding combining various colours and textures.
- 4 Skyline parapet detail, Masterwall insulated external cladding used in conjunction with composite materials (eg. brick, aluminium cladding).

SHARING OUR RESEARCH AND KNOWLEDGE

When you choose Masterwall products you not only get Australia's leading Insulated Wall systems and coatings, you also are assured industry-leading support and the reassurance that all our Distributors and Accredited Installers are trained experts:

- Nationwide telephone technical support.
- Online resources including detailed construction manuals.
- Regular building seminars across metropolitan and regional Australia.
- Regular feedback to regulatory bodies; building surveyors (AIBS), Councils, the CSIRO & the MBA.

NATIONAL DISTRIBUTION

Masterwall products are available in most parts of Australia via our network of capital city and regional distributors.

WARRANTY

Masterwall Australia Pty Ltd warrants that its products are free from defects in materials and workmanship for a period of 7 years from the date of purchase. (For a full description of the Warranty refer to the Masterwall website).

ONLINE SUPPORT

Further details are available on the Masterwall website including downloadable brochures:

www.masterwall.com.au

YOUR LOCAL ACCREDITED INSTALLER / DISTRIBUTOR:

TO LEARN MORE:
MASTERWALL.COM.AU

NATIONAL ENQUIRIES:
03 9799 6565

ADDRESS. 18-20 Cyber Loop, Dandenong South 3175, Victoria Australia
EMAIL. sales@masterwall.com.au **FAX.** 03 8740 2180