



SHARING OUR RESEARCH AND KNOWLEDGE

When you choose Masterwall products you not only get Australia's leading Insulated Wall systems and coatings, you also are assured industry-leading support and the reassurance that all our Distributors and Accredited Installers are trained experts:

- Nationwide telephone technical support.
- Online resources including detailed construction manuals.
- Regular building seminars across metropolitan and regional Australia.
- Regular feedback to regulatory bodies; building surveyors (AIBS), Councils, the CSIRO & the MBA.

NATIONAL DISTRIBUTION

Masterwall products are available in most parts of Australia via our network of capital city and regional distributors.

WARRANTY

Masterwall Australia Pty Ltd warrants that its products are free from defects in materials and workmanship for a period of 7 years from the date of purchase. (For a full description of the Warranty refer to the Masterwall website).

YOUR LOCAL ACCREDITED INSTALLER / DISTRIBUTOR:

TO LEARN MORE:
MASTERWALL.COM.AU

NATIONAL ENQUIRIES:
03 9799 6565

ADDRESS: 18-20 Cyber Loop, Dandenong South 3175, Victoria Australia
EMAIL: sales@masterwall.com.au FAX: 03 8740 2180

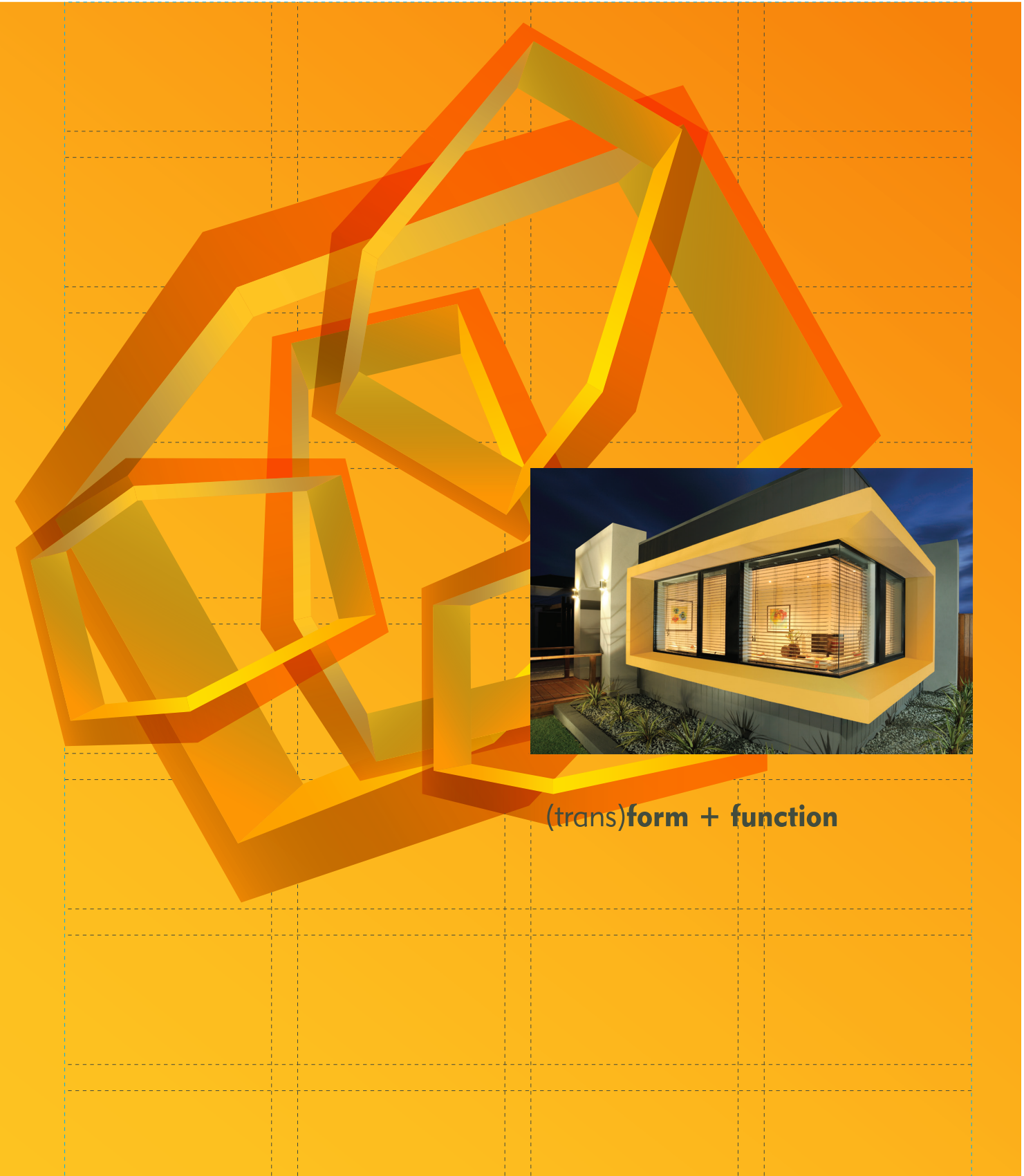
ONLINE SUPPORT

Further details are available on the Masterwall website including downloadable brochures:

www.masterwall.com.au



Architectural shadings visually transform building facades and deliver energy efficiency.



UMBRA Architectural Shadings enable architects and designers to achieve modern and linear building facades that are optimised for energy efficiency. This lightweight, fully engineered monolithic canopy, blade or fin system can be designed to any custom shape to protect windows and doors from the harsh Australian heat and glare. The outcome is reduced heat gain, energy savings and added thermal comfort that contribute to achieving excellence in energy efficiency.

PRODUCT SPECIFICATIONS

Umbra is a lightweight engineered solution for providing architectural shading for windows or as a feature to form definition to any design. Umbra comprises of stainless steel brackets, fixed to a variety of substrates with a weather-tight detailing and finished with a render in any colour or texture. The Umbra shapes are custom made to suit desired design and dimensions, which are installed over concealed brackets with a robust adhesive. Umbra is completed with architectural render finishes.

Product:

- M Grade fire retardant polystyrene.
- Brackets are made from grade 316 stainless steel, comprising of 16mm diameter hollow rod with welded mounting plate allowing for two fixing points into the substrate.

Dimensions:

UMBRA depth is to be no more than 600mm from base of bracket. Leading edge is a minimum of 80mm. Umbra length is unlimited.

Application:

UMBRA is ideal for installing as part of the rendered MasterWall or K-Series systems; alternatively can be placed with non-rendered facades claddings, such as weatherboard, face brick or feature claddings. Suitable for installation over a variety of substrates such as timber & steel frame construction, masonry brick, concrete block and precast concrete panels.

Finish:

A minimum thickness of 5mm polymer modified render should be applied in two coats over entire UMBRA system. A range of architectural colours and finishes is available.

Warranty:

7 years: Masterwall Australia Pty Ltd warrants that its products are free from defects in materials and workmanship for a period of 7 years from the date of purchase.

For the complete Specification and Construction Details, refer to the UMBRA System Manual available on the Masterwall Australia website:

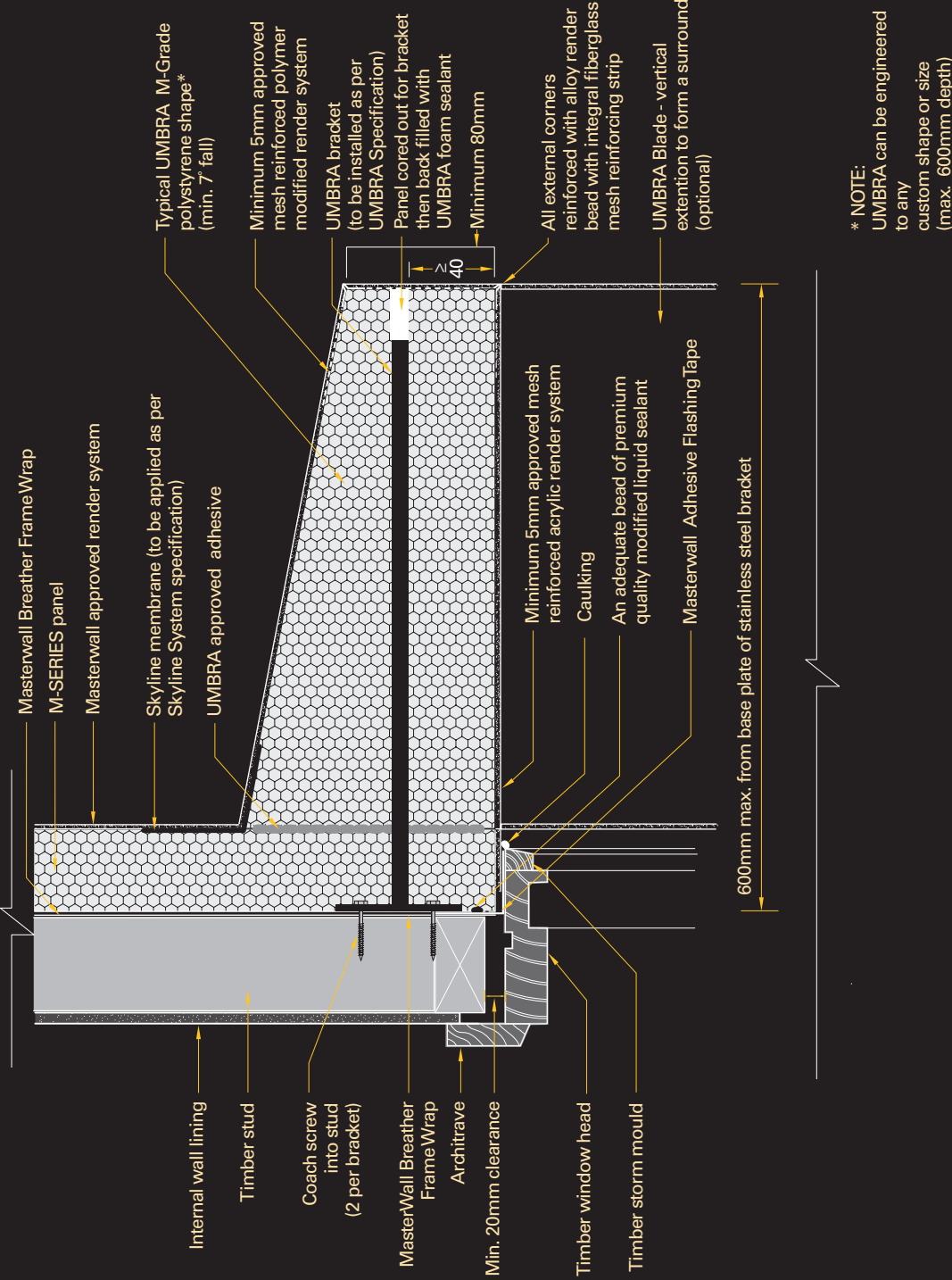
<http://www.masterwall.com.au>

PHOTOGRAPHY:

Spinnaker Boulevard, WA.

These waterfront townhouses epitomise style and sophistication. UMBRA Architectural Shadings have been thoughtfully integrated around windows and doors to create a cutting edge design that maximising energy efficiency and comfort.

TYPICAL CONSTRUCTION DETAIL
A FULL SET OF CONSTRUCTION DETAILS ARE AVAILABLE ON THE WEBSITE



UMBRA / M-SERIES PANEL / TIMBER WINDOW:
TYPICAL HEAD DETAIL

These details are indicative for the purpose of illustrating the typical installation of UMBRA system. UMBRA system to be installed strictly in accordance with the specifications. Substrate construction to be in accordance with the Building Regulations & Statutory Requirements.